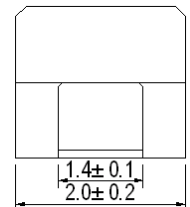
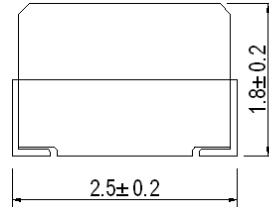
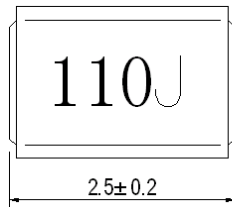


YKWL2520F



特征:

- 可承受高温和湿度。
- 可抵受碰撞及强压。
- 具有准确的尺寸供自动表面装配之用。
- 应用于电脑产品（硬碟、磁碟机等）、通讯材料、数据机、电视组合、录像机等，防止幅射干扰以遵从 CE, FCC, VDE, VCC 防幅射条例。

Inductance Range/电感范围: 0.12nH~100nH.

Temperature Range/使用温度: -30°C~100°C.

Electrical Characteristics/电气特性

Part No 名称	Inductance 电感(μH)	Min. Quality Factor 品质因子	L/Q Test Freq 测试频率(MHz)	DC Resulance 直流电阻 Max (Ω)	Rated Current 额定电流 (mA)	Min. Self-resonant Frequency 自谐频率
YKWL2520FR12K	0.12±10%	30	25.2	0.37	520	600
YKWL2520FR27K	0.27±10%	30	25.2	0.56	420	425
YKWL2520FR39K	0.39±10%	30	25.2	0.65	375	375
YKWL2520FR47K	0.47±10%	30	25.2	0.68	350	350
YKWL2520FR56K	0.56±10%	30	25.2	0.75	325	300
YKWL2520FR68K	0.68±10%	30	25.2	0.85	300	270
YKWL2520FR82K	0.82±10%	30	25.2	1.0	260	250
YKWL2520F1R0J	1.0±5%	30	7.96	1.1	245	220
YKWL2520F2R7J	2.7±5%	30	7.96	1.7	195	55
YKWL2520F3R9J	3.9±5%	30	7.96	2.1	180	43
YKWL2520F4R7J	4.7±5%	30	7.96	2.3	175	40
YKWL2520F5R6J	5.6±5%	25	7.96	2.5	170	36
YKWL2520F6R8J	6.8±5%	25	7.96	2.7	165	33
YKWL2520F8R2J	8.2±5%	25	7.96	3.05	165	30
YKWL2520F120J	12±5%	25	2.52	3.80	150	23
YKWL2520F150J	15±5%	25	2.52	4.40	140	20
YKWL2520F270J	27±5%	25	2.52	6.30	115	16
YKWL2520F390J	39±5%	20	2.52	9.50	90	14
YKWL2520F470J	47±5%	20	2.52	11.1	80	13
YKWL2520F560J	56±5%	20	2.52	12.1	75	12
YKWL2520F680J	68±5%	20	2.52	16.6	70	11
YKWL2520F820J	82±5%	20	2.52	19.0	65	10
YKWL2520F101J	100±5%	15	0.796	21.0	60	9

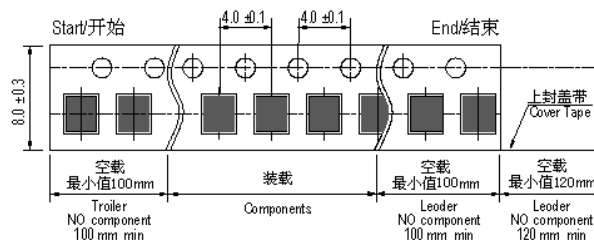
FEATURES:

- High resistance to heat and humidity.
- Resistance to mechanical shocks and pressure.
- Accurate dimensions for automatically surface mounted
- Widely use in computer products.(Hard disks,Floppy Disks,etc) 、Communcation products、modems、TV sets、VCRs、etc.Counter-measures for complying with CE、FCC VDE or VCCI radialiated emissions

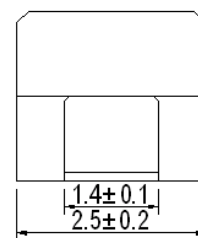
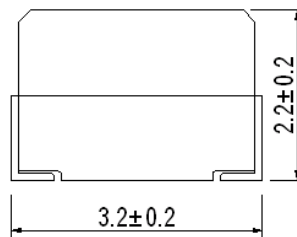
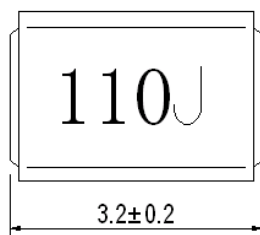
Sans Plomb (SGS Certified Result) 本产品满足环境保护要求(有害物质限用)					
pb 铅	Cd 镉	Cd 汞	六价铬 Cr+6	多溴联苯 PBBs	多溴联醚 PBDEs
<1000PPm	Nd	Nd	Nd	Nd	Nd

- 1、Inductance is measured with a LCR meter: Agilent 4287 or equivalent. Test frequency at 25.2MHz-0.796MHz.
 - 2、DC resistance is measured with a Digital Multimeter VR1153 LCR+DCR or equivalent.
 - 3、The DC Bias test with VR1153 & VR7210, The maximum allowable current is a DC current which causes initial inductance to decrease by 25%. or temperature to rise by 40°C, whichever is smaller. (At ambient reference temperature: 20°C).
- 1、电感值测试仪: Agilent 4287 或同等 LCR Meter.测试频率 25.2MHz-0.796MHz.
 - 2、直流电阻测试仪: VR1153 LCR+DCR 或同等的 DCR 测试设备。
 - 3、最大容许电流测试: VR1153 & VR7210; 最大容许电流定义: 电感下降 25%或温度上升 40°C时取其小值作为最大容许电流。(周围环境温度 20°C)

Packaging/包装方式 2000 PCS/REEL



YKWL3225F



特征:

- 可承受高温和湿度。
- 可抵受碰撞及强压。
- 具有准确的尺寸供自动表面装配之用。
- 应用于电脑产品（硬碟、磁碟机等）、通讯材料、数据机、电视组合、录像机等，防止辐射干扰以遵从 CE, FCC, VDE, VCC 防辐射条例。

Inductance Range/电感范围: 0.12nH~100nH.

Temperature Range/使用温度: -30°C~100°C.

Electrical Characteristics/电气特性

Part No 名称	Inductance 电感(μH)	Min. Quality Factor 品质因子	L/Q Test Freq 测试频率(MHz)	DC Resutance 直流电阻 Max (Ω)	Rated Current 额定电流 (mA)	Min. Self-resonant Frequency 自谐频率
YKWL3225FR12K	0.12±10%	30	25.2	0.22	450	500
YKWL3225FR39K	0.39±10%	30	25.2	0.45	450	250
YKWL3225FR47K	0.47±10%	30	25.2	0.50	450	220
YKWL3225FR56K	0.56±10%	30	25.2	0.55	450	180
YKWL3225FR82K	0.82±10%	30	25.2	0.65	450	140
YKWL3225F1R0J	1.0±5%	30	7.96	0.70	400	120
YKWL3225F2R7J	2.7±5%	30	7.96	1.10	290	70
YKWL3225F3R9J	3.9±5%	30	7.96	1.30	250	55
YKWL3225F4R7J	4.7±5%	30	7.96	1.50	220	50
YKWL3225F5R6J	5.6±5%	30	7.96	1.60	200	47
YKWL3225F8R2J	8.2±5%	30	7.96	2.00	170	40
YKWL3225F100J	10±5%	30	2.52	2.10	150	36
YKWL3225F150J	15±5%	30	2.52	2.80	130	30
YKWL3225F270J	27±5%	30	2.52	5.00	80	20
YKWL3225F390J	39±5%	30	2.52	6.40	65	16
YKWL3225F470J	47±5%	30	2.52	7.00	60	15
YKWL3225F560J	56±5%	30	2.52	8.00	55	13
YKWL3225F820J	82±5%	30	2.52	10.0	45	11
YKWL3225F101J	100±5%	20	0.796	10.0	40	10
YKWL3225F221J	220±5%	20	0.796	21.0	50	7

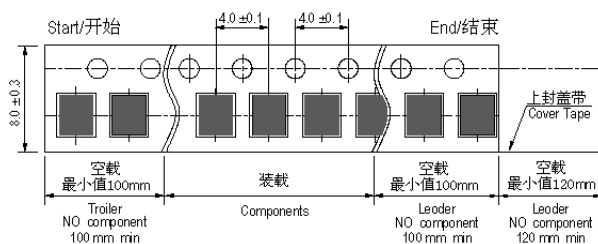
FEATURES:

- High resistance to heat and humidity.
- Resistance to mechanical shocks and pressure.
- Accurate dimensions for automatically surface mounted
- Widely use in computer products.(Hard disks,Floppy Disks,etc) 、Communcation products、modems、TV sets、VCRs、etc.Counter-measures for complying with CE、FCC VDE or VCCI radialiated emissions

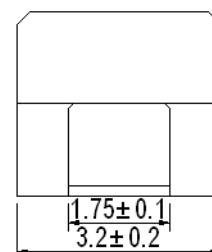
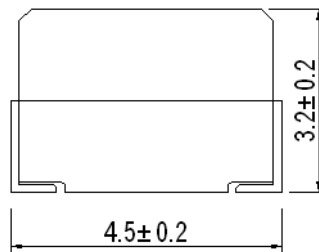
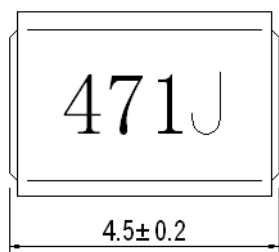
Sans Plomb (SGS Certified Result) 本产品满足环境保护要求(有害物质限用)					
pb 铅	Cd 镉	Cd 汞	六价铬 Cr+6	多溴联苯 PBBs	多溴联醚 PBDEs
<1000PPm	Nd	Nd	Nd	Nd	Nd

- 1、Inductance is measured with a LCR meter: Agilent 4287 or equivalent. Test frequency at 25.2MHz-0.796MHz.
 - 2、DC resistance is measured with a Digital Multimeter VR1153 LCR+DCR or equivalent.
 - 3、The DC Bias test with VR1153 & VR7210, The maximum allowable current is a DC current which causes initial inductance to decrease by 25%. or temperature to rise by 40°C, whichever is smaller. (At ambient reference temperature: 20°C).
- 1、电感值测试仪: Agilent 4287 或同等 LCR Meter. 测试频率 25.2MHz-0.796MHz.
 - 2、直流电阻测试仪: VR1153 LCR+DCR 或同等的 DCR 测试设备。
 - 3、最大容许电流测试: VR1153 & VR7210; 最大容许电流定义: 电感下降 25%或温度上升 40°C时取其小值作为最大容许电流。(周围环境温度 20°C)

Packaging/包装方式 2000 PCS/REEL



YKWL4532F



特征:

- 可承受高温和湿度。
- 可抵受碰撞及强压。
- 具有准确的尺寸供自动表面装配之用。
- 应用于电脑产品（硬碟、磁碟机等）、通讯材料、数据机、电视组合、录像机等，防止幅射干扰以遵从 CE, FCC, VDE, VCCI 防幅射条例。

FEATURES:

- High resistance to heat and humidity.
- Resistance to mechanical shocks and pressure.
- Accurate dimensions for automatically surface mounted
- Widely use in computer products.(Hard disks,Floppy Disks,etc) 、Communcation products、modems、TV sets、VCRs、etc.Counter-measures for complying with CE、FCC VDE or VCCI radiated emissions

Inductance Range/电感范围:0.47uH~1000uH.

Temperature Range/使用温度: -30℃~100℃.

Electrical Characteristics/电气特性

Part No 名称	Inductance 电感(μH)	Min. Quality Factor 品质因子	L/Q Test Freq 测试频率(MHz)	DC Resutance 直流电阻 Max (Ω)	Rated Current 额定电流 (mA)	Min. Self-resonant Frequency 自谐频率
YKWL4532FR47M	0.47±20%	30	25.2	0.50	450	220
YKWL4532FR56M	0.56±20%	30	25.2	0.55	450	180
YKWL4532FR82M	0.82±20%	30	25.2	0.67	450	140
YKWL4532F1R0K	1.0±10%	50	7.96	0.50	450	100
YKWL4532F3R9K	3.9±10%	50	7.96	0.90	330	40
YKWL4532F4R7K	4.7±10%	50	7.96	1.00	315	35
YKWL4532F6R2K	6.2±10%	50	7.96	1.40	270	25
YKWL4532F100K	10±10%	50	2.52	1.60	250	20
YKWL4532F270K	27±10%	50	2.52	3.60	170	12
YKWL4532F390K	39±10%	50	2.52	4.50	150	10
YKWL4532F470K	47±10%	50	2.52	5.0	140	10
YKWL4532F820K	82±10%	50	2.52	7.0	120	8
YKWL4532F101K	100±10%	40	0.796	8.0	110	7
YKWL4532F271K	270±10%	30	0.796	18	92	3
YKWL4532F391K	390±10%	30	0.796	23	80	3
YKWL4532F821K	820±10%	30	0.796	45	30	2
YKWL4532F102K	1000±10%	30	0.796	50	30	2

Sans Plomb (SGS Certified Result) 本产品满足环境保护要求 (有害物质限用)					
pb 铅	Cd 镉	Cd 汞	六价铬 Cr+6	多溴联苯 PBBs	多溴联醚 PBDEs
<1000PPm	Nd	Nd	Nd	Nd	Nd

- 1、Inductance is measured with a LCR meter: Agilent 4287 or equivalent. Test frequency at 25.2MHz-0.796MHz.
- 2、DC resistance is measured with a Digital Multimeter VR1153 LCR+DCR or equivalent.
- 3、The DC Bias test with VR1153 & VR7210, The maximum allowable current is a DC current which causes initial inductance to decrease by 25%. or temperature to rise by 40℃, whichever is smaller. (At ambient reference temperature: 20℃).

- 1、电感值测试仪: Agilent 4287 或同等 LCR Meter.测试频率 25.2MHz-0.796MHz。
- 2、直流电阻测试仪: VR1153 LCR+DCR 或同等的 DCR 测试设备。
- 3、最大容许电流测试: VR1153 & VR7210; 最大容许电流定义: 电感下降 25%或温度上升 40℃时取其小值作为最大容许电流。(周围环境温度 20℃)

Packaging/包装方式 500 PCS/REEL

