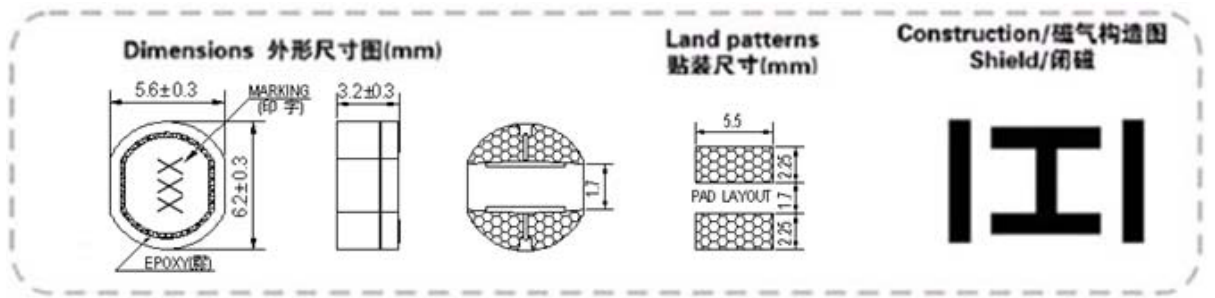


YKCDRI63B



特征:

- 具有抗电磁干扰。
- 银器,低成本的设计。
- 具有高功率, 强力高饱和电感器。。
- 适用于回流焊 SMT 工艺。
- 广泛应用于升降压转换器、液晶显示、笔记本电脑、个人掌上记事本、MP3/MP4 播放器、数码相机、便携式光碟机等。

FEATURES:

- With magnetic shield against radiation.
- Silver Plated Type, Low cost design.
- High power, high saturation inductors.
- Suitable for reflow soldering.
- Widely use in DC-DC converter /LCD TV/ Notebook/PDA/MP3-MP4player/Digitalcamera /Portable CDR-W etc.

Inductance Range/电感范围:10μH~68μH.

Temperature Range/使用温度: -30℃~100℃.

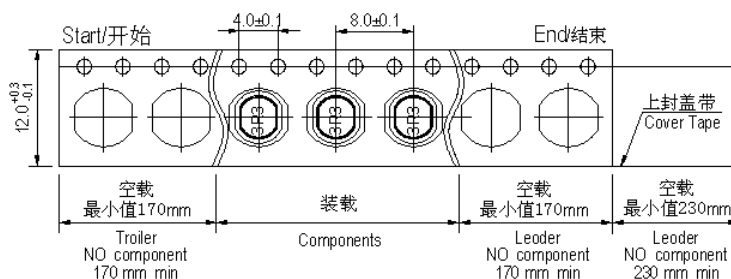
Electrical Characteristics/电气特性

Part No. 名称	Inductance 电感(μH)	Test Condition 测试条件	Tolerance 公差(%)	DC Resistance 直流电阻Max(Ω)	Rated Current 额定电流(A)
YKCDRI63B-100N	10	100KHz,0.25	±30	0.14	1.00
YKCDRI63B-120N	12	100KHz,0.25	±30	0.16	0.94
YKCDRI63B-150N	15	100KHz,0.25	±30	0.18	0.86
YKCDRI63B-180N	18	100KHz,0.25	±30	0.25	0.78
YKCDRI63B-220N	22	100KHz,0.25	±30	0.32	0.76
YKCDRI63B-270N	27	100KHz,0.25	±30	0.36	0.64
YKCDRI63B-330N	33	100KHz,0.25	±30	0.41	0.61
YKCDRI63B-390N	39	100KHz,0.25	±30	0.47	0.53
YKCDRI63B-470N	47	100KHz,0.25	±30	0.51	0.50
YKCDRI63B-560N	56	100KHz,0.25	±30	0.72	0.46
YKCDRI63B-680N	68	100KHz,0.25	±30	0.82	0.42

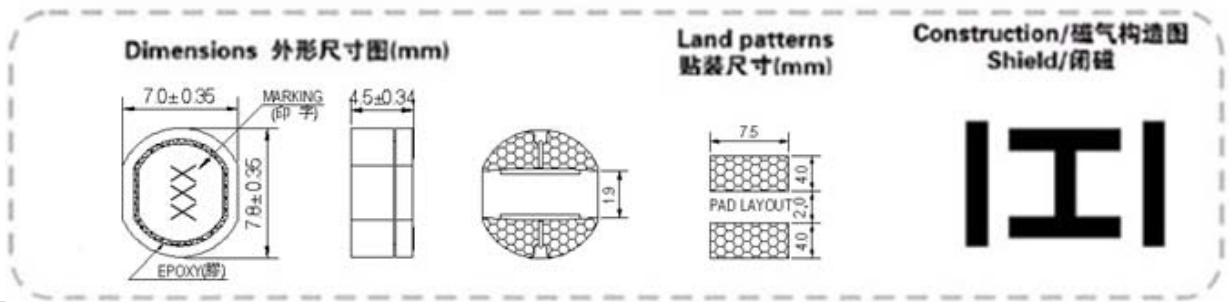
Sans Plomb (SGS Certified Result) 本产品满足环境保护要求(有害物质限用)					
pb 铅	Cd 镉	Cd 汞	六价铬 Cr+6	多溴联苯 PBBs	多溴联醚 PBDEs
<1000PPm	Nd	Nd	Nd	Nd	Nd

- 1、Inductance is measured with a LCR meter: VR1153 LCR +DCR or equivalent. Test frequency at 100 kHz/1KHz.
 - 2、DC resistance is measured with a Digital Multimeter VR1153 LCR+DCR or equivalent.
 - 3、The DC Bias test with VR1153 & VR7210, The maximum allowable current is a DC current which causes initial inductance to decrease by 25%. or temperature to rise by 40℃,whichever is smaller. (At ambient reference temperature: 20℃).
- 1、电感值测试仪: VR1153 LCR+DCR 或同等 LCR Meter.测试频率 100KHz。
 - 2、直流电阻测试仪: VR1153 LCR+DCR 或同等的 DCR 测试设备。
 - 3、最大容许电流测试: VR1153 & VR7210; 最大容许电流定义: 电感下降 25%或温度上升 40℃时取其小值作为最大容许电流。(周围环境温度 20℃)

Packaging/包装方式 1000 PCS/REEL



YKCDRI74B



特征:

- 具有抗电磁干扰。
- 银器,低成本的设计。
- 具有高功率, 强力高饱和电感器。。
- 适用于回流焊 SMT 工艺。
- 广泛应用于升降压转换器、液晶显示、笔记本电脑、个人掌上记事本、MP3/MP4 播放器、数码相机、便携式光碟机等。

FEATURES:

- With magnetic shield against radiation.
- Silver Plated Type, Low cost design.
- High power, high saturation inductors.
- Suitable for reflow soldering.
- Widely use in DC-DC converter /LCD TV/ Notebook/PDA/MP3-MP4player/Digitalcamera /Portable CDR-W etc.

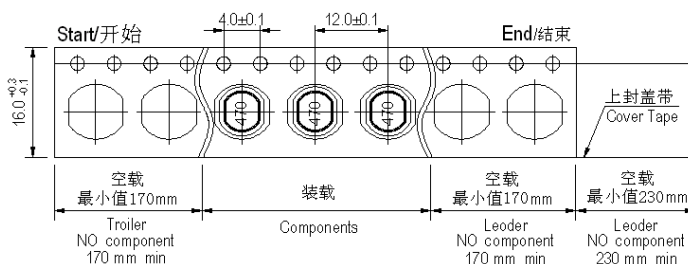
Inductance Range/电感范围: 10μH~270μH.

Temperature Range/使用温度: -30℃~100℃.

Electrical Characteristics/电气特性

Part No. 名称	Inductance 电感(μH)	Test Condition 测试条件	Tolerance 公差(%)	DC Resulance 直流电阻Max(Ω)	Rated Current 额定电流(A)
YKCDRI74B-100N	10	100KHz,0.25	±30	0.07	1.65
YKCDRI74B-120N	12	100KHz,0.25	±30	0.07	1.57
YKCDRI74B-150N	15	100KHz,0.25	±30	0.08	1.39
YKCDRI74B-180N	18	100KHz,0.25	±30	0.10	1.29
YKCDRI74B-220N	22	100KHz,0.25	±30	0.13	1.12
YKCDRI74B-270N	27	100KHz,0.25	±30	0.16	1.06
YKCDRI74B-330N	33	100KHz,0.25	±30	0.18	0.97
YKCDRI74B-390N	39	100KHz,0.25	±30	0.18	0.91
YKCDRI74B-470N	47	100KHz,0.25	±30	0.27	0.80
YKCDRI74B-560N	56	100KHz,0.25	±30	0.29	0.76
YKCDRI74B-680N	68	100KHz,0.25	±30	0.33	0.68
YKCDRI74B-820N	82	100KHz,0.25	±30	0.43	0.62
YKCDRI74B-101N	100	10KHz,0.25	±30	0.49	0.55
YKCDRI74B-121N	120	10KHz,0.25	±30	0.68	0.49
YKCDRI74B-151N	150	10KHz,0.25	±30	0.94	0.44
YKCDRI74B-181N	180	10KHz,0.25	±30	1.00	0.40
YKCDRI74B-221N	220	10KHz,0.25	±30	1.18	0.36
YKCDRI74B-271N	270	10KHz,0.25	±30	1.30	0.33

Packaging/包装方式 1000 PCS/REEL



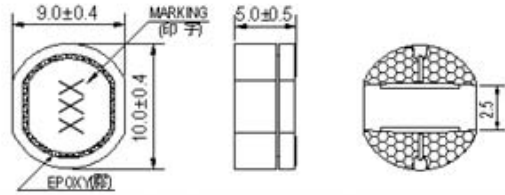
Sans Plomb (SGS Certified Result) 本产品满足环境保护要求(有害物质限用)					
pb 铅	Cd 镉	Cd 汞	六价铬 Cr+6	多溴联苯 PBBs	多溴联醚 PBDEs
<1000PPm	Nd	Nd	Nd	Nd	Nd

- 1、Inductance is measured with a LCR meter: VR1153 LCR +DCR or equivalent. Test frequency at 100 kHz/1KHz.
 - 2、DC resistance is measured with a Digital Multimeter VR1153 LCR+DCR or equivalent.
 - 3、The DC Bias test with VR1153 & VR7210, The maximum allowable current is a DC current which causes initial inductance to decrease by 25%. or temperature to rise by 40℃, whichever is smaller. (At ambient reference temperature: 20℃).
- 1、电感值测试仪: VR1153 LCR+DCR 或同等 LCR Meter. 测试频率 100KHz.
 - 2、直流电阻测试仪: VR1153 LCR+DCR 或同等的 DCR 测试设备。
 - 3、最大容许电流测试: VR1153 & VR7210; 最大容许电流定义: 电感下降 25%或温度上升 40℃时取其小值作为最大容许电流。(周围环境温度 20℃)

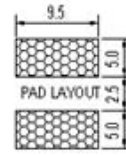
YKCDRI105B



Dimensions 外形尺寸图(mm)



Land patterns 贴片尺寸(mm)



Construction/磁气构造图 Shield/闭磁



特征:

- 具有抗电磁干扰。
- 银器,低成本的设计。
- 具有高功率, 强力高饱和电感器。。
- 适用于回流焊 SMT 工艺。
- 广泛应用于升降压转换器、液晶显示、笔记本电脑、个人掌上记事本、MP3/MP4 播放器、数码相机、便携式光碟机等。

Inductance Range/电感范围:10μH~470μH.

Temperature Range/使用温度: -30℃~100℃.

Electrical Characteristics/电气特性

Part No. 名称	Inductance 电感(μH)	Test Condition 测试条件	Tolerance 公差(%)	DC Resutance 直流电阻Max(Ω)	Rated Current 额定电流(A)
YKCDRI105B-100N	10	100KHz,0.25	±30	0.06	2.06
YKCDRI105B-120N	12	100KHz,0.25	±30	0.07	1.94
YKCDRI105B-150N	15	100KHz,0.25	±30	0.07	1.72
YKCDRI105B-180N	18	100KHz,0.25	±30	0.08	1.58
YKCDRI105B-220N	22	100KHz,0.25	±30	0.08	1.42
YKCDRI105B-270N	27	100KHz,0.25	±30	0.10	1.32
YKCDRI105B-330N	33	100KHz,0.25	±30	0.11	1.16
YKCDRI105B-390N	39	100KHz,0.25	±30	0.12	1.10
YKCDRI105B-470N	47	100KHz,0.25	±30	0.14	1.00
YKCDRI105B-560N	56	100KHz,0.25	±30	0.19	0.93
YKCDRI105B-680N	68	100KHz,0.25	±30	0.21	0.85
YKCDRI105B-820N	82	10KHz,0.25	±30	0.28	0.79
YKCDRI105B-101N	100	10KHz,0.25	±30	0.34	0.72
YKCDRI105B-121N	120	10KHz,0.25	±30	0.37	0.63
YKCDRI105B-151N	150	10KHz,0.25	±30	0.51	0.55
YKCDRI105B-181N	180	10KHz,0.25	±30	0.57	0.50
YKCDRI105B-221N	220	10KHz,0.25	±30	0.78	0.47
YKCDRI105B-271N	270	10KHz,0.25	±30	0.87	0.41
YKCDRI105B-331N	330	10KHz,0.25	±30	1.20	0.37
YKCDRI105B-391N	390	10KHz,0.25	±30	1.34	0.35
YKCDRI105B-471N	470	10KHz,0.25	±30	1.50	0.33

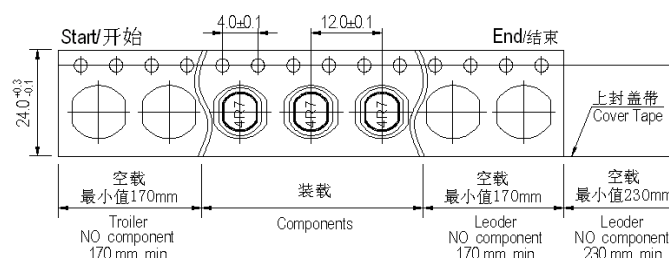
FEATURES:

- With magnetic shield against radiation.
- Silver Plated Type, Low cost design.
- High power, high saturation inductors.
- Suitable for reflow soldering.
- Widely use in DC-DC converter /LCD TV/ Notebook/PDA/MP3-MP4player/Digitalcamera /Portable CDR-W etc.

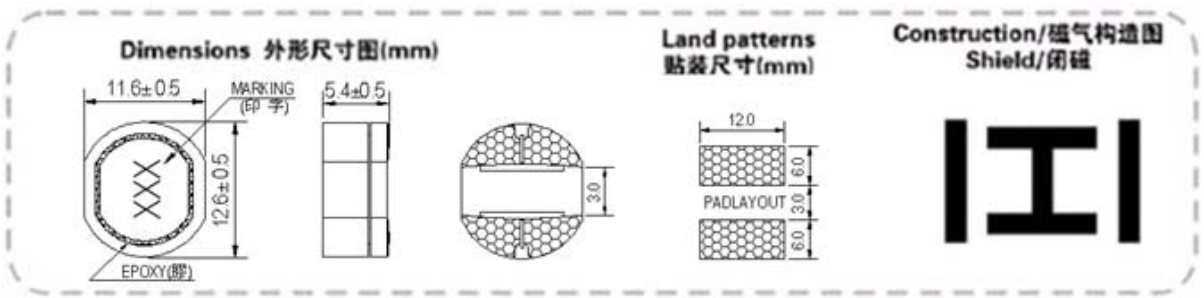
Sans Plomb (SGS Certified Result) 本产品满足环境保护要求(有害物质限用)					
pb 铅	Cd 镉	Cd 汞	六价铬 Cr+6	多溴联苯 PBBs	多溴联醚 PBDEs
<1000PPm	Nd	Nd	Nd	Nd	Nd

- 1、Inductance is measured with a LCR meter: VR1153 LCR +DCR or equivalent. Test frequency at 100 kHz/1KHz.
 - 2、DC resistance is measured with a Digital Multimeter VR1153 LCR+DCR or equivalent.
 - 3、The DC Bias test with VR1153 & VR7210, The maximum allowable current is a DC current which causes initial inductance to decrease by 25%. or temperature to rise by 40℃,whichever is smaller. (At ambient reference temperature: 20℃).
- 1、电感值测试仪: VR1153 LCR+DCR 或同等 LCR Meter.测试频率 100KHz.
 - 2、直流电阻测试仪: VR1153 LCR+DCR 或同等的 DCR 测试设备。
 - 3、最大容许电流测试: VR1153 & VR7210; 最大容许电流定义: 电感下降 25%或温度上升 40℃时取其小值作为最大容许电流。(周围环境温度 20℃)

Packaging/包装方式 750 PCS/REEL



YKCDRI125B



特征:

- 具有抗电磁干扰。
- 银器,低成本的设计。
- 具有高功率, 强力高饱和电感器。。
- 适用于回流焊 SMT 工艺。
- 广泛应用于升降压转换器、液晶显示、笔记本电脑、个人掌上记事本、MP3/MP4 播放器、数码相机、便携式光碟机等。

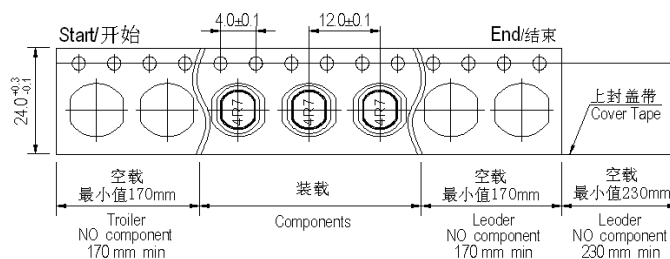
Inductance Range/电感范围: 10μH~680μH.

Temperature Range/使用温度: -30℃~100℃.

Electrical Characteristics/电气特性

Part No. 名称	Inductance 电感(μH)	Test Condition 测试条件	Tolerance 公差(%)	DC Resistance 直流电阻Max(Ω)	Rated Current 额定电流(A)
YKCDRI125B-100N	10	100KHz,0.25	±30	0.05	2.65
YKCDRI125B-120N	12	100KHz,0.25	±30	0.05	2.50
YKCDRI125B-150N	15	100KHz,0.25	±30	0.06	2.45
YKCDRI125B-180N	18	100KHz,0.25	±30	0.06	2.40
YKCDRI125B-220N	22	100KHz,0.25	±30	0.07	2.20
YKCDRI125B-270N	27	100KHz,0.25	±30	0.08	2.00
YKCDRI125B-330N	33	100KHz,0.25	±30	0.10	1.80
YKCDRI125B-390N	39	100KHz,0.25	±30	0.11	1.65
YKCDRI125B-470N	47	100KHz,0.25	±30	0.12	1.50
YKCDRI125B-560N	56	100KHz,0.25	±30	0.15	1.38
YKCDRI125B-680N	68	100KHz,0.25	±30	0.17	1.26
YKCDRI125B-820N	82	10KHz,0.25	±30	0.20	1.14
YKCDRI125B-101N	100	10KHz,0.25	±30	0.25	1.05
YKCDRI125B-121N	120	10KHz,0.25	±30	0.28	0.95
YKCDRI125B-151N	150	10KHz,0.25	±30	0.40	0.85
YKCDRI125B-181N	180	10KHz,0.25	±30	0.48	0.77
YKCDRI125B-221N	220	10KHz,0.25	±30	0.52	0.70
YKCDRI125B-271N	270	10KHz,0.25	±30	0.70	0.63
YKCDRI125B-331N	330	10KHz,0.25	±30	0.80	0.57
YKCDRI125B-391N	390	10KHz,0.25	±30	1.08	0.52
YKCDRI125B-471N	470	10KHz,0.25	±30	1.20	0.48
YKCDRI125B-561N	560	10KHz,0.25	±30	1.34	0.44
YKCDRI125B-681N	680	10KHz,0.25	±30	1.78	0.36

Packaging/包装方式 500 PCS/REEL



FEATURES:

- With magnetic shield against radiation.
- Silver Plated Type, Low cost design.
- High power, high saturation inductors.
- Suitable for reflow soldering.
- Widely use in DC-DC converter /LCD TV/ Notebook/PDA/MP3-MP4player/Digitalcamera /Portable CDR-W etc.

Sans Plomb (SGS Certified Result) 本产品满足环境保护要求(有害物质限用)					
pb 铅	Cd 镉	Cd 汞	六价铬 Cr+6	多溴联苯 PBBs	多溴联醚 PBDEs
<1000PPm	Nd	Nd	Nd	Nd	Nd

- 1、Inductance is measured with a LCR meter: VR1153 LCR +DCR or equivalent. Test frequency at 100 kHz/1KHz.
 - 2、DC resistance is measured with a Digital Multimeter VR1153 LCR+DCR or equivalent.
 - 3、The DC Bias test with VR1153 & VR7210, The maximum allowable current is a DC current which causes initial inductance to decrease by 25%. or temperature to rise by 40℃, whichever is smaller. (At ambient reference temperature: 20℃).
- 1、电感值测试仪: VR1153 LCR+DCR 或同等 LCR Meter. 测试频率 100KHz.
 - 2、直流电阻测试仪: VR1153 LCR+DCR 或同等的 DCR 测试设备。
 - 3、最大容许电流测试: VR1153 & VR7210; 最大容许电流定义: 电感下降 25%或温度上升 40℃时取其小值作为最大容许电流。(周围环境温度 20℃)